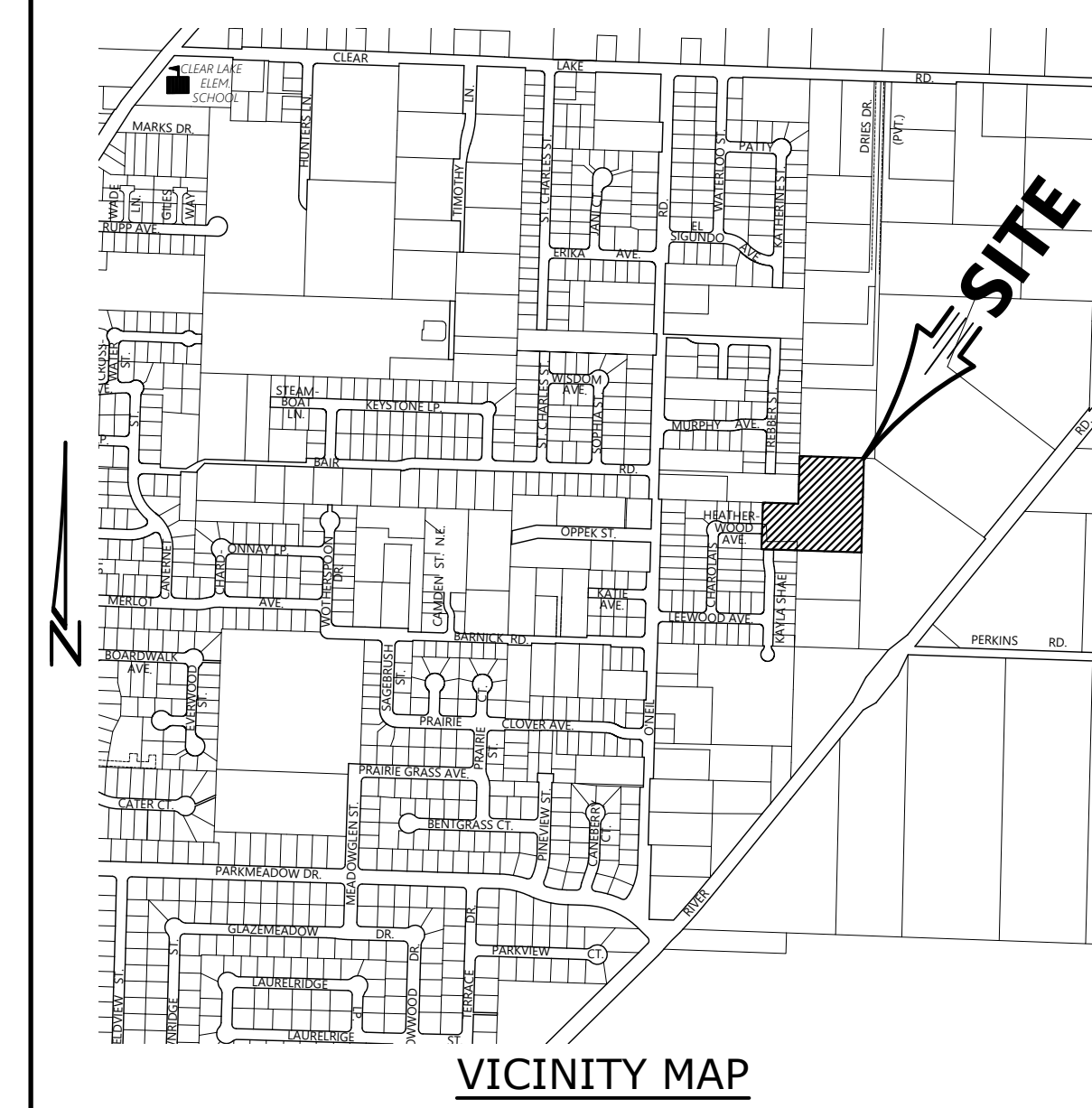


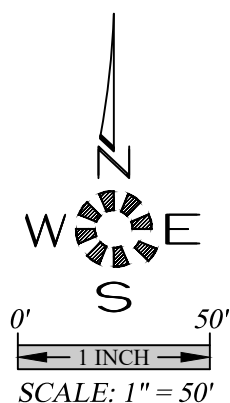
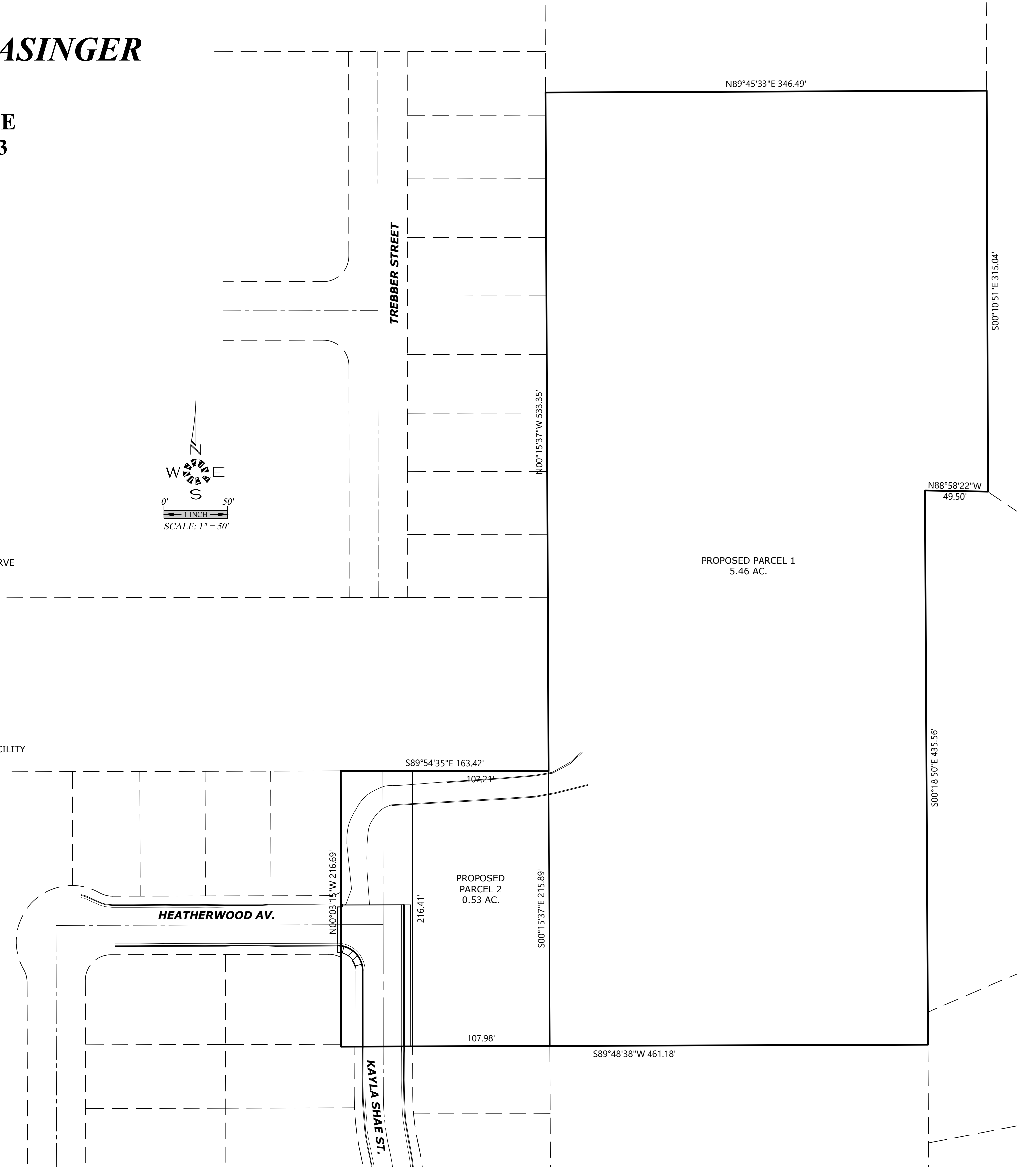
BASINGER PARTITIONING PLAN

SEC. 23 & 24, T. 6 S., R. 3 W., W.M.
CITY OF KEIZER
MARION COUNTY, OREGON

Owner / Developer:
KATHLEEN R. BASINGER
LIVING TRUST
7624 KAYLA SHAE ST. NE
KEIZER, OREGON 97303



GPS OPUS SOLUTION
BASED ON NGS CONTROL POINT RD2677
CHEMAWA 2 RM 5 AZIMUTH
A PK ON THE EAST SIDE OF KAYLA SHAE ST.
BETWEEN LEEWOOD AV. & KAYLA SHAE CR.
N253216.098 W182925.176 OCRS SALEM
ZONE NAD 83 HORIZONTAL.
168.471 NGVD29 VERTICAL.

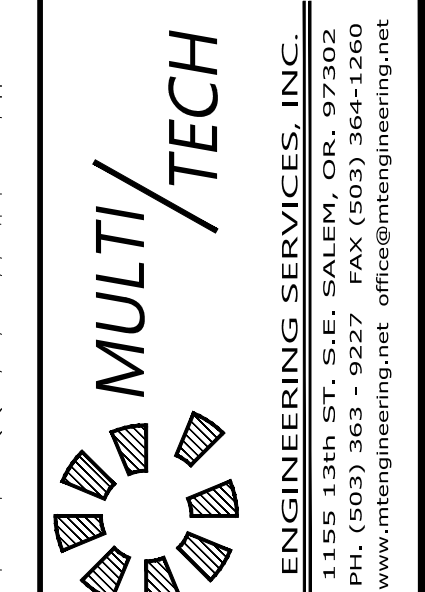


ABBREVIATIONS

A.C. ASPHALTIC CONCRETE	L. LENGTH, LINE
ACMP ALUMINIZED CMP	L.P. LIGHT POLE
ASSY. ASSEMBLY	M. METER, MAIN
B.O. BLOW OFF	M.H. MANHOLE
B.F.V. BUTTERFLY VALVE	MTL. METAL
C & G CURB & GUTTER	O.H. OVERHEAD
CATV CABLE TELEVISION	PC. POINT OF CURVE
C.B. CATCH BASIN	PCC. POINT OF CONTINUING CURVE
C.B.C.O. CATCH BASIN CLEANOUT	PED. PEDESTAL
C.B.I. CATCH BASIN INLET	PRC. POINT OF REVERSE CURVE
CCR COMPACTED CRUSHED ROCK	PROP. PROPOSED
C.L. CENTERLINE	PT. POINT OF TANGENCY
CMP CORRUGATED METAL PIPE	PUB. PUBLIC
C.O. CLEANOUT	PUE. PUBLIC UTILITY EASMT.
CONC. CONCRETE	PVC. POLYVINYL CHLORIDE
CONST. CONSTRUCT	PVT. PRIVATE
D.I. DUCTILE IRON	P.P. POWER POLE
DIA. DIAMETER	P.L. PROPERTY LINE
DWG. DRAWING	R. RADIUS
EASMT. EASEMENT	R- RIM
E.G. EXIST. GRADE / GROUND	RD. ROOF DRAIN
EOP, E.P. EDGE OF PAVEMENT	R.O.W. RIGHT-OF-WAY
ELEC. ELECTRIC	SAN.S. or S.S. SANITARY SEWER
ELEV. or EL. ELEVATION	S. SLOPE
EX. or EXIST. EXISTING	S.Q.F. STORMWATER QUALITY FACILITY
F.D.C. FIRE DEPT. CONNECTION	STA. STATION
FT. FEET	STD. STANDARD
F.F. FINISH FLOOR	STL. STEEL
F.G. FINISH GRADE	STM.DRN. or S.D. STORM DRAIN
F.H. FIRE HYDRANT	SVC. SERVICE
F.M. FORCE MAIN	SW. SIDEWALK
GUT. or GTR. GUTTER	T.C. TOP OF CURB
G.V. GATE VALVE	TEL. TELEPHONE
IMP. IMPROVEMENT	TYP. TYPICAL
INST. INSERT	U.G. UNDERGROUND
INV. or I- INVERT	VL. VAULT
	W.M. WATER MAIN

SYMBOLS

EX. BLOW OFF ASSY.	EX. PROP. MANHOLE SAN. SEWER
EX. CATCH BASIN	EX. PROP. MANHOLE STORM DRAIN
EX. CATCH BASIN CLEANOUT	EX. PROP. 2' DIA. C.O. / M.H.
EX. CATCH BASIN INLET	EX. PROP. MANHOLE TELEPHONE
EX. CATV PED. / BOX	EX. PROP. MANHOLE WATER
EX. CLEANOUT	EX. PROP. REDUCER / INCREASER
EX. ELEC. PED. / BOX	EX. PROP. TEL. PED. / BOX
EX. FIRE HYDRANT	EX. PROP. TRAFFIC PED. / BOX
EX. GAS LOCATION MARKER	EX. PROP. UTILITY / POWER POLE
EX. GAS VALVE	EX. PROP. WATER METER
EX. MAIL BOX	EX. PROP. WATER VALVE
--- CABLE TELEVISION	--- SANITARY SEWER EXIST.
--- CENTERLINE	--- SANITARY SEWER CONST.
--- DITCH C.L.	--- STORM DRAIN EXIST.
--- ELECTRICAL LINE	--- STORM DRAIN CONST.
--- GAS MAIN	--- WATER MAIN EXIST.
--- TELEPHONE LINE	--- WATER MAIN CONST.



COVER SHEET

BASINGER PARTITIONING PLAN

Design:	M.D.G.
Drawn:	D.G.G.
Checked:	N.G.J.
Issue Date:	6/10/24
Scale:	AS SHOWN
As-Built:	

REGISTERED PROFESSIONAL ENGINEER
MARK D. GWYN
STATE OF OREGON
LICENSE NO. 40942
EXPIRES: 06-30-2025

SHEET INDEX

SHEET 101	COVER SHEET
SHEET 102	EXISTING CONDITIONS PLAN
SHEET 103	UTILITIES & FUTURE STREET PLAN

Z:\New\7642_BasingerPartitioning\7642_BasingerPartitioning.dwg 10:51:56 6/10/2024 10:12:50 AM D:Galle